

Recombinant Human PD-1 Protein

Cat No.: GX00656

Swiss Prot:

Q15116

种属:

Human

表达宿主:

293F

表达区间:

Leu25-Thr168

实际分子量:

标签:

C-terminal Fc, 6×His tag

纯度:

>95% by SDS-PAGE.

内毒素:

<0.1EU/ug of the protein by LAL method.

制剂:

Lyophilized from a 0.22 μm filtered solution of PBS, pH 7.4. Contact us for customized product form or formulation.

描述:

Recombinant Human Human PD-1 Protein is produced by 293F expression system. The target protein is expressed with sequence (Leu25-Thr168) of Human Human PD-1 (Accession Q15116) fused with a C-terminal Fc, 6×His tag.

储存:

Store at -20°C. Store the lyophilized protein at -20°C to -80 °C up to 1 year from the date of receipt.

After reconstitution, the protein solution is stable at -20°C for 3 months, at 2-8°C for up to 1 week.

未开盖的干粉蛋白在 -20°C 至 -80°C 可保存 12 个月;

复溶之后, 蛋白溶液在 -20°C 及以下可保存 3 个月, 在 2-8°C 可保存 1 周。

复溶:

武汉市东湖高新区光谷三路 777 号自贸生物创新港 (生物医药平台检验研发楼) 4 楼



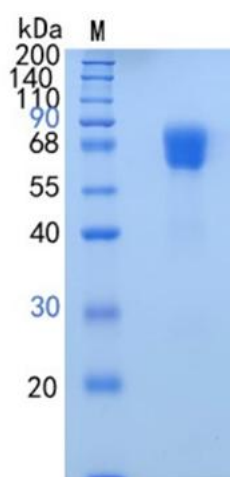
400 8814 520



www.biojx.com

Centrifuge the vial before opening. Reconstitute to a concentration of 0.1-0.5 mg/mL in sterile distilled water. Avoid vortex or vigorously pipetting the protein. For long term storage, it is recommended to add a carrier protein or stabilizer (e.g. 0.1% BSA, 5% HSA, 10% FBS or 5% Trehalose), and aliquot the reconstituted protein solution to minimize free-thaw cycles.

收到重组蛋白产品之后请检查蛋白冻干粉末是否贴于瓶底，如果粉末浮起，开盖之前请先低温离心。将蛋白用说明书中指定的缓冲液复溶至 0.1-0.5 mg/mL（请注意蛋白复溶浓度不能低于 0.1 mg/mL），室温平衡 5-10 min 保证充分溶解，复溶过程中请不要剧烈涡旋及吹打蛋白溶液。如需长期储存，建议复溶时添加载体蛋白或者稳定剂（如 0.1% BSA, 5% HSA, 10% FBS 或者 5% 海藻糖），同时将复溶后的蛋白溶液按照需求进行分装，储存于 -20°C 至 -80°C，随取随用，避免反复冻融。



活性测试：

Immobilized Recombinant Human PD-1 at 5 μ g/mL (100 μ L/well) can bind Recombinant Human PD-L1 with a linear range of 0.5-2 μ g/mL.